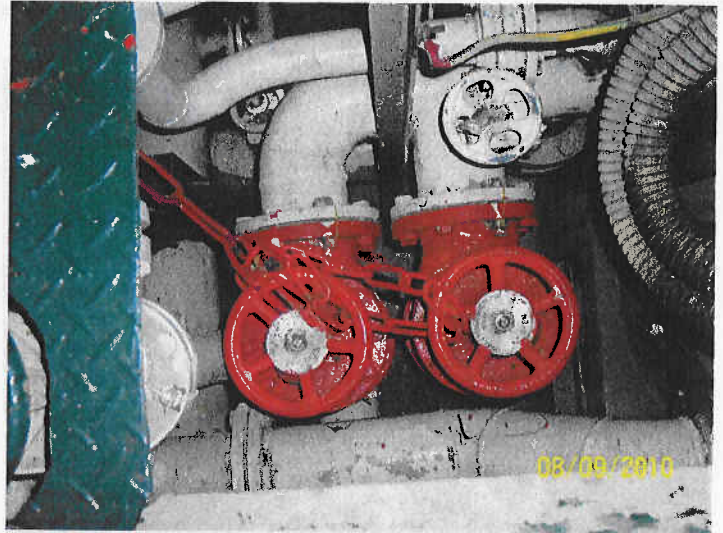


M/T PLOUTOS
ON-GOING ENVIRONMENTAL AUDIT
ARABIAN GULF
SEPTEMBER 07-12, 2010



9/8/2010
19 Manual sounding FO sludge tank.JPG



9/8/2010
01 Valves chained and sealed.JPG



9/8/2010
01 Emerg. Bilge crossover.JPG

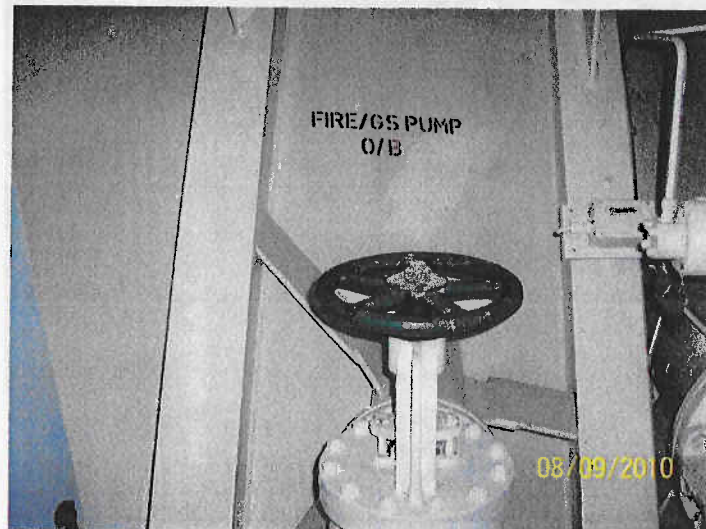


9/8/2010
03 Emerg. Bilge suction.JPG

INT. PLOUTOS
ON-GOING ENVIRONMENTAL AUDIT
ARABIAN GULF
SEPTEMBER 07-12, 2010



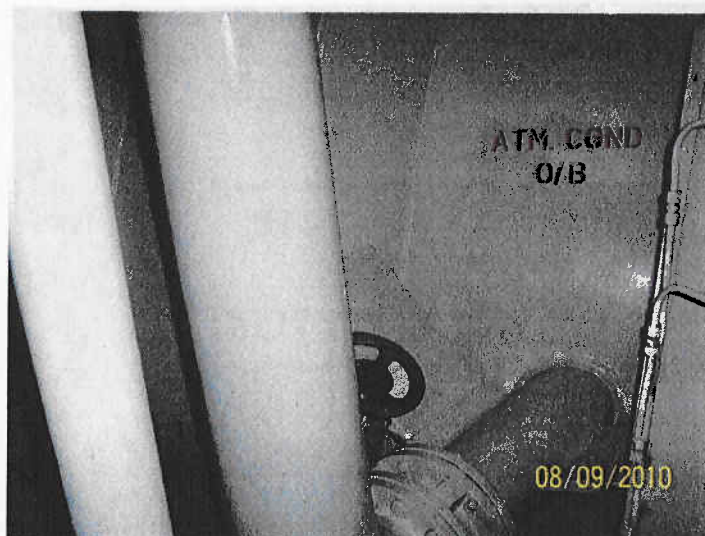
9/8/2010
20 Testing for'd bilge alarm.JPG



9/8/2010
01.JPG



9/8/2010
02 ME crankcase.JPG

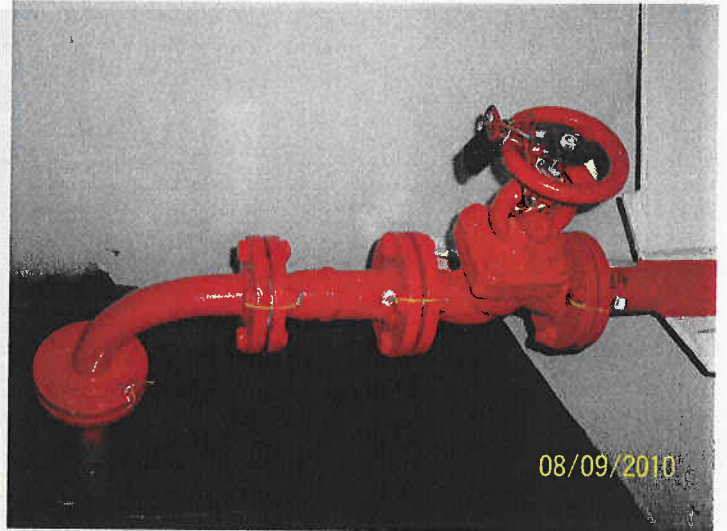


9/8/2010
02.JPG

**M/T PLOUTOS
ON-GOING ENVIRONNEMENTAL AUDIT
ARABIAN GULF
SEPTEMBER 07-12, 2010**



9/8/2010
04.JPG



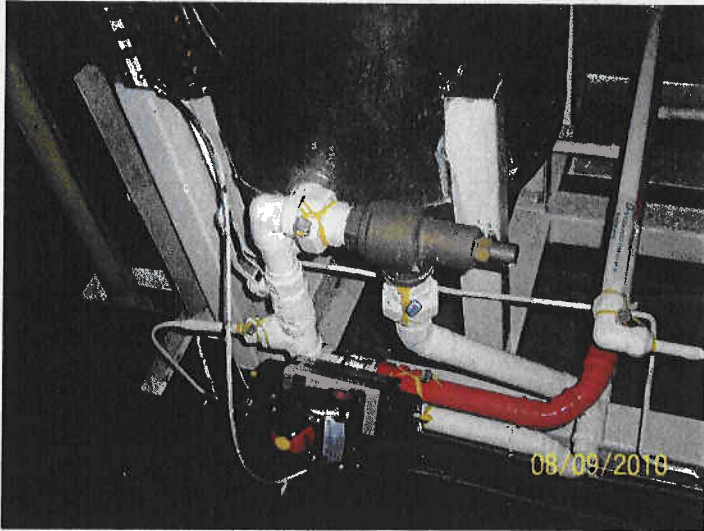
9/8/2010
09 OVB valve locked & sealed.JPG



9/8/2010
13 OVB valve notice.JPG



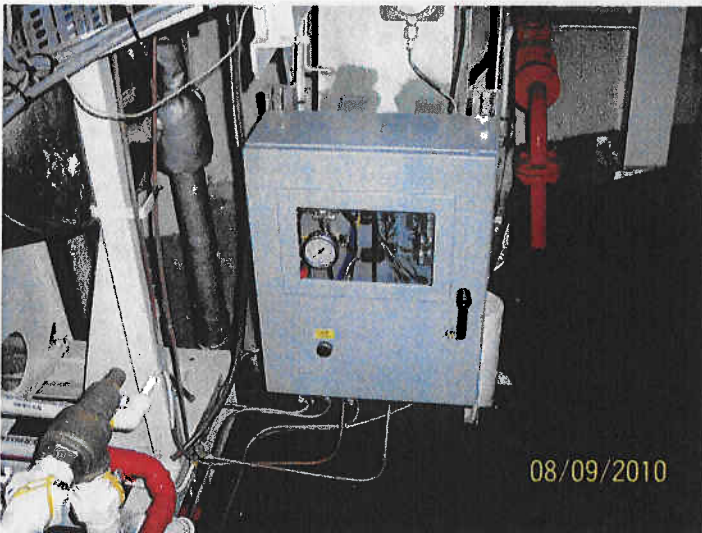
9/8/2010
03 OCM with seals on sampling line.JPG



9/8/2010
04 Three-way valve with seals & recirculation piping.JPG



9/8/2010
05 OWS MEPC 107(49).JPG

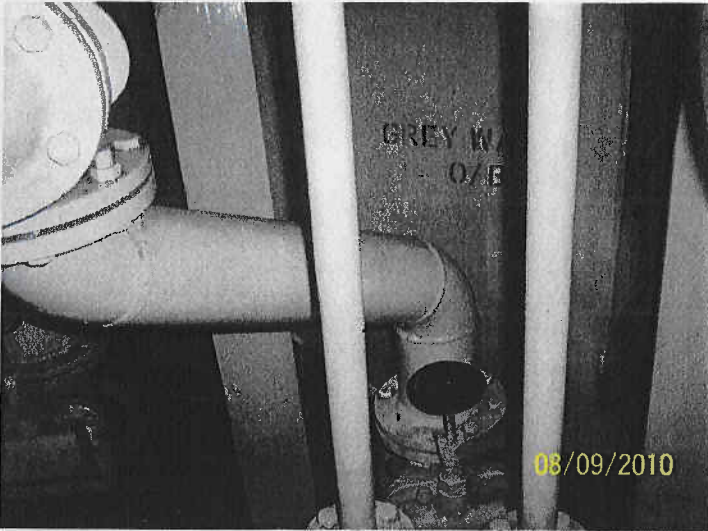


9/8/2010
06 SWOMS envirologger.JPG

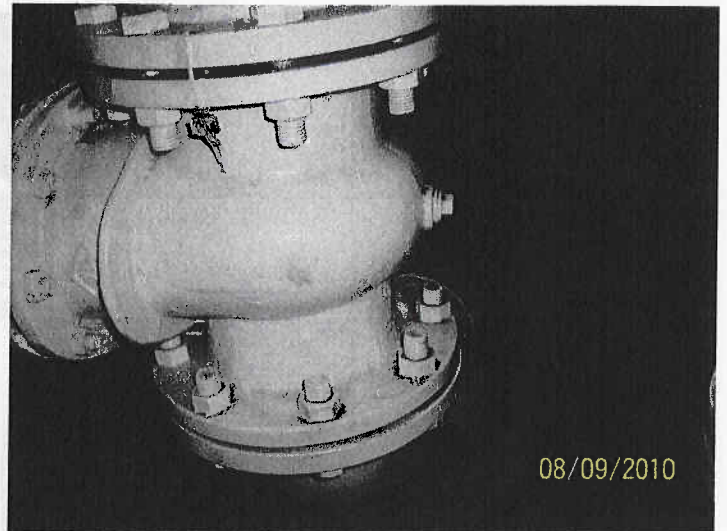


9/8/2010
01 OWS.JPG

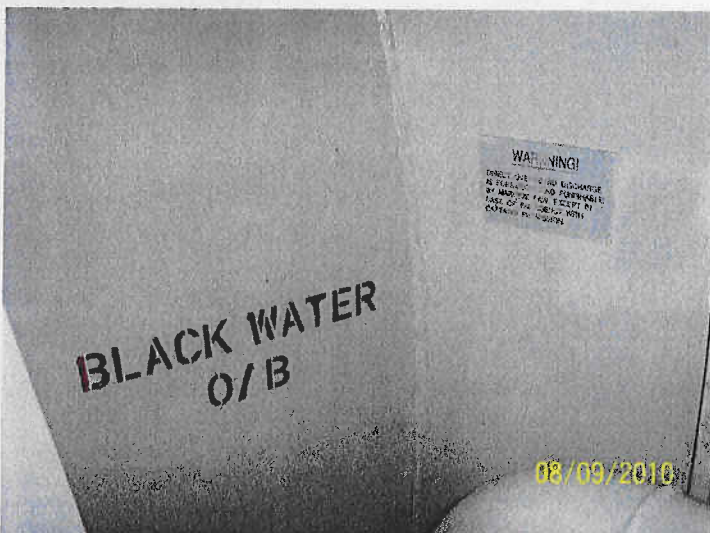
M/T PLOUTOS
ON-GOING ENVIRONNEMENTAL AUDIT
ARABIAN GULF
SEPTEMBER 07-12, 2010



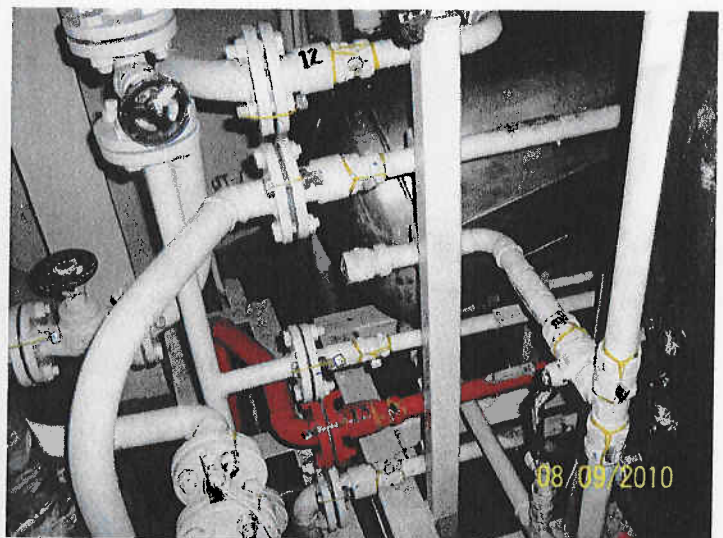
9/8/2010
100_7104.JPG



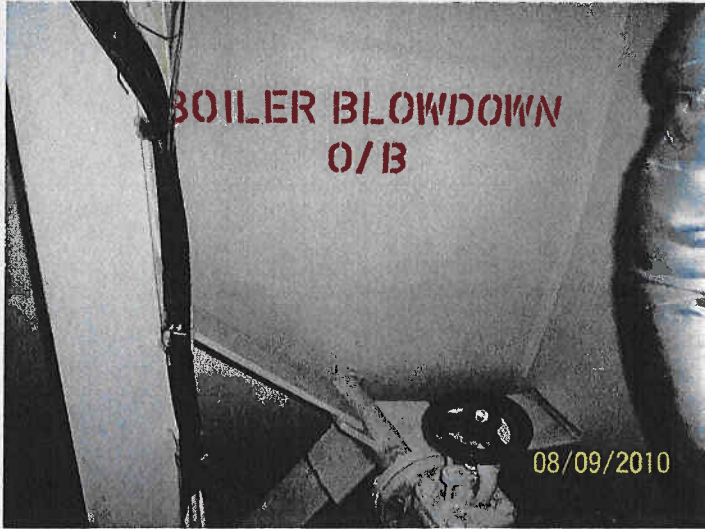
9/8/2010
03.JPG



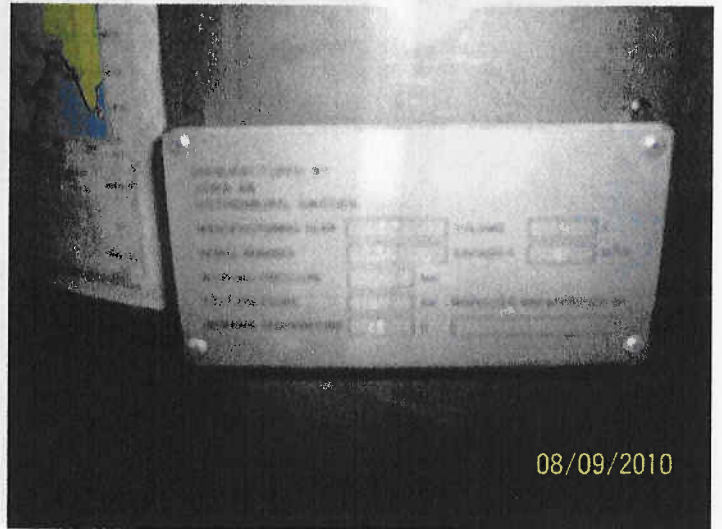
9/8/2010
100_7106.JPG



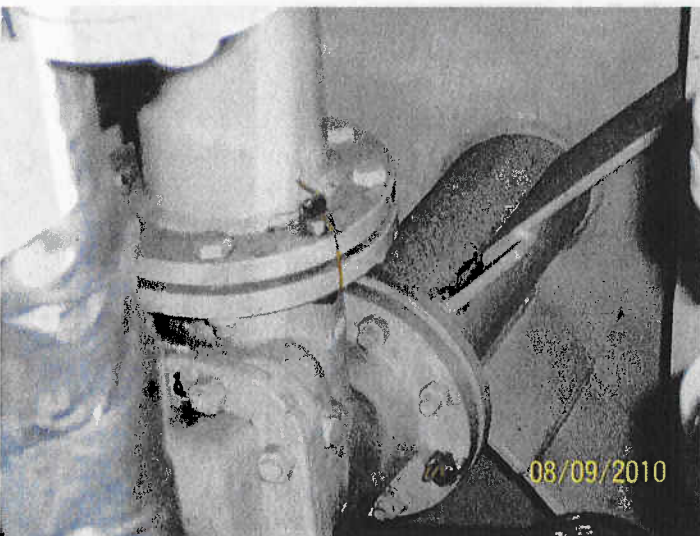
9/8/2010
07 OWS piping with seals.JPG



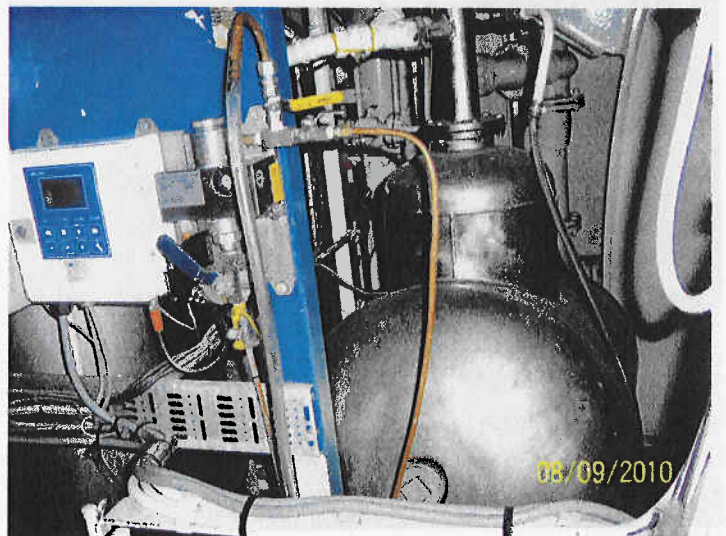
9/8/2010
06.JPG



9/8/2010
14 OWS nameplate.JPG



9/8/2010
05.JPG



9/8/2010
02 OWS with OCM.JPG

M/T PLOUTOS
ON-GOING ENVIRONNEMENTAL AUDIT
ARABIAN GULF
SEPTEMBER 07-12, 2010



9/8/2010
03 ME crankcase.JPG



9/8/2010
01 ME.JPG



9/8/2010
100_7116.JPG



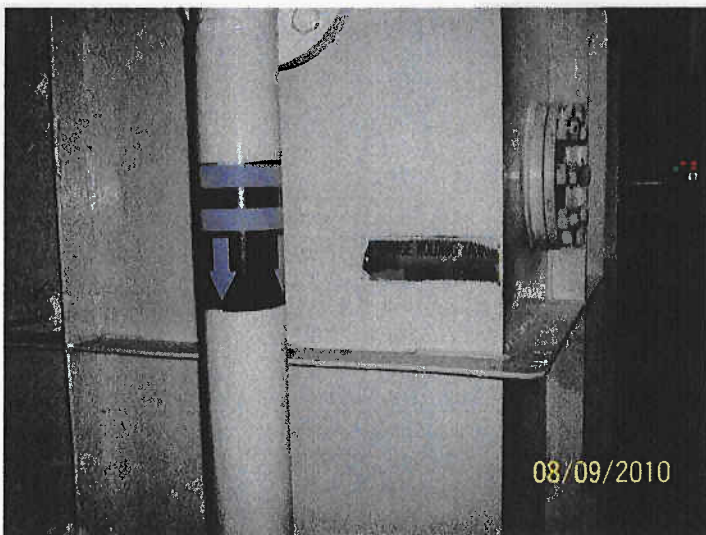
9/8/2010
100_7117.JPG



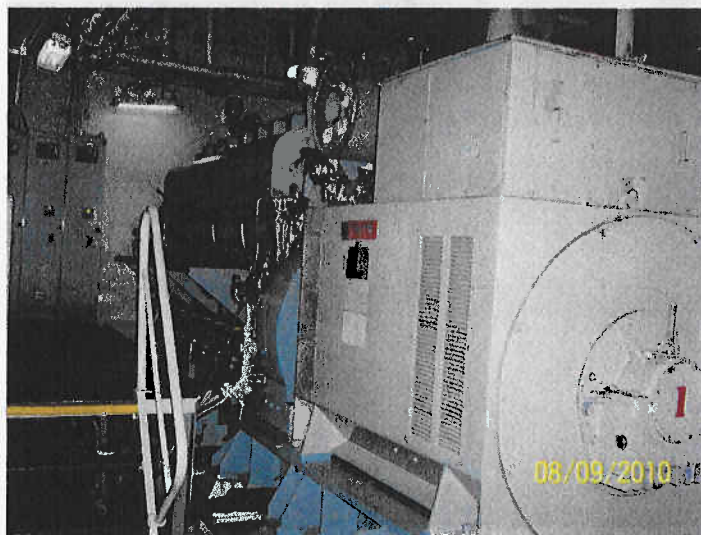
9/8/2010
100_7118.JPG



9/8/2010
100_7119.JPG

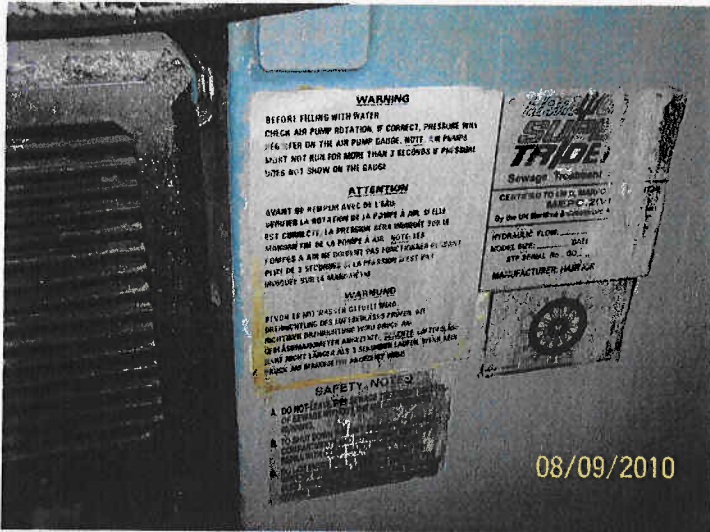


9/8/2010
100_7120.JPG



9/8/2010
04 Aux engine.JPG

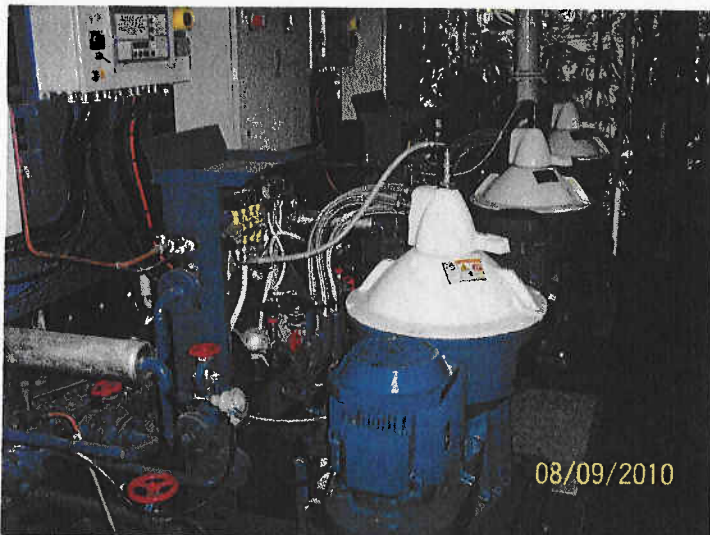
M/T PLOUTOS
ON-GOING ENVIRONNEMENTAL AUDIT
ARABIAN GULF
SEPTEMBER 07-12, 2010



9/8/2010
 100_7123.JPG



9/8/2010
 02 LO purifiers.JPG



9/8/2010
 01 FO purifiers.JPG



9/8/2010
 03 Purifier setting panel.JPG



9/8/2010
05 Steering engine.JPG



9/8/2010
08 ER garbage collection.JPG



9/8/2010
01 Incinerator furnace.JPG



9/8/2010
02 Furnace condition.JPG

SEPTEMBER 07-12, 2010



9/8/2010
03 Name Plate.JPG



9/8/2010
09 ER garbage collection.JPG

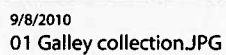
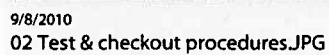
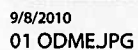


9/8/2010
08 Tech repairing envirologger unit in ECR.JPG

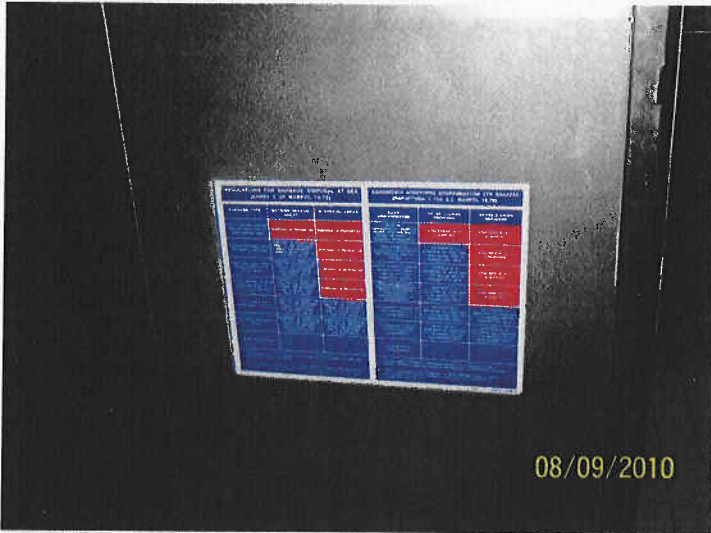


9/8/2010
21 Datalogger record of Bilge alarm.JPG

Exhibit 3
96 of 107



M/T PLOUTOS
ON-GOING ENVIRONNEMENTAL AUDIT
ARABIAN GULF
SEPTEMBER 07-12, 2010



9/8/2010
 02 Galley poster.JPG



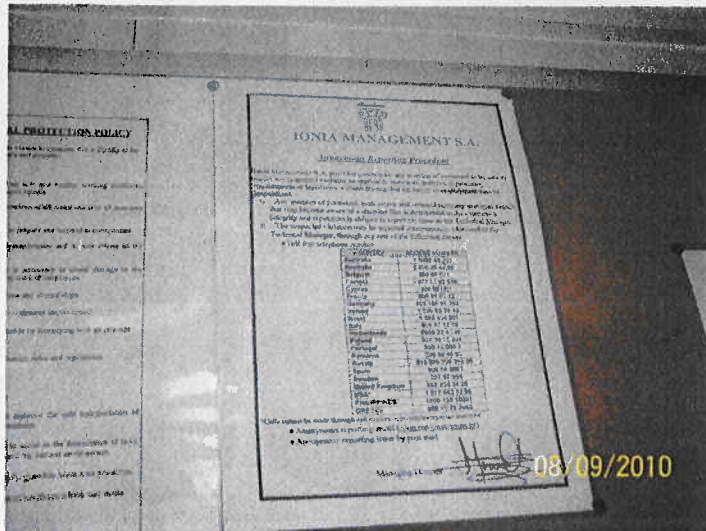
9/8/2010
 03 Pantry Crew.JPG



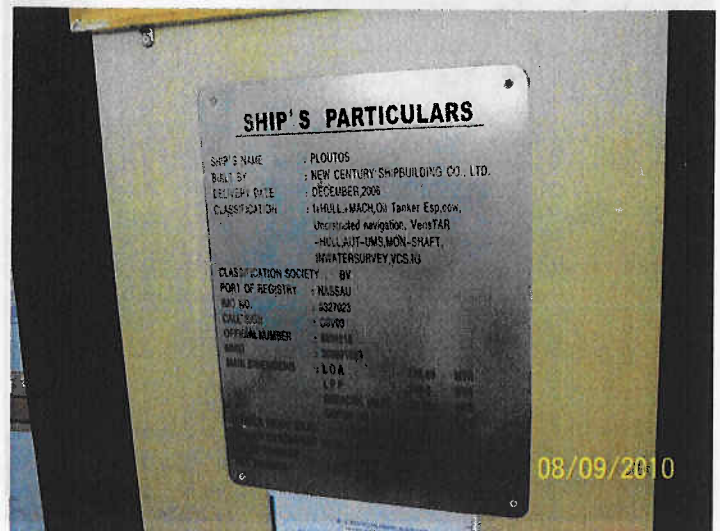
9/8/2010
 04 Pantry officer.JPG



9/8/2010
 05 Pantry officer.JPG



9/8/2010
01 Anonymous reporting poster.JPG



9/8/2010
01 MT Ploutos.JPG



9/8/2010
02 MT Ploutos at Jebel Ali.JPG



9/8/2010
11 Mixed containers for garbage.JPG

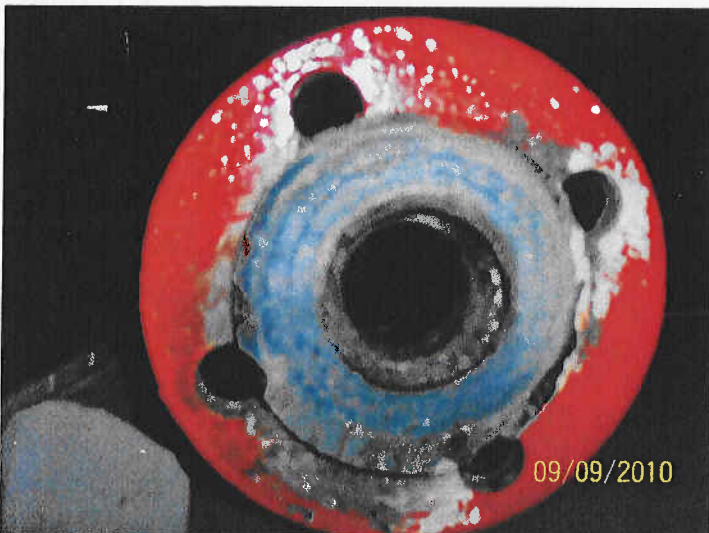
**M/T PLOUTOS
ON-GOING ENVIRONNEMENTAL AUDIT
ARABIAN GULF
SEPTEMBER 07-12, 2010**



9/9/2010
10 Opening adjacent valve pipe for inspection.JPG



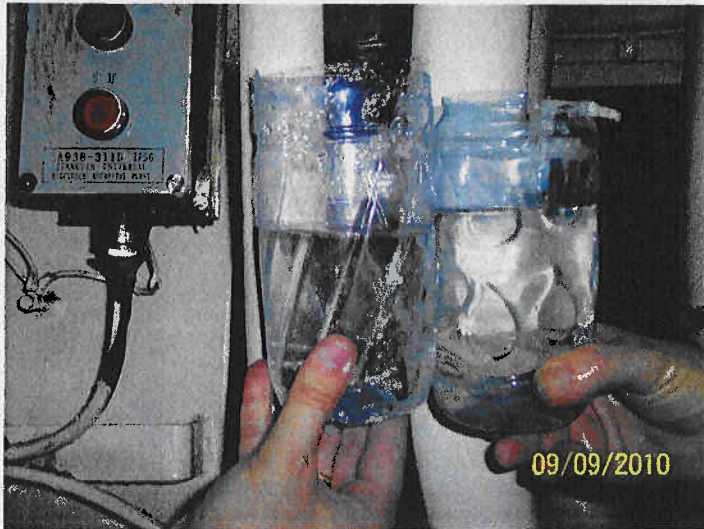
9/9/2010
11 OVBD valve end.JPG



9/9/2010
12 Adjacent pipe end.JPG



9/9/2010
15 Source tank sounding.JPG



9/9/2010
16 First in & out samples.JPG



9/10/2010
18 ZERO reading on OCM at end of test.JPG



9/10/2010
17 Last in & out samples.JPG



9/10/2010
01 Sewage OVBD STD valve.JPG

M/T PLOUTOS
ON-GOING ENVIRONMENTAL AUDIT
ARABIAN GULF
SEPTEMBER 07-12, 2010



9/10/2010
 02 Sewage OVBD STD valve (2).JPG



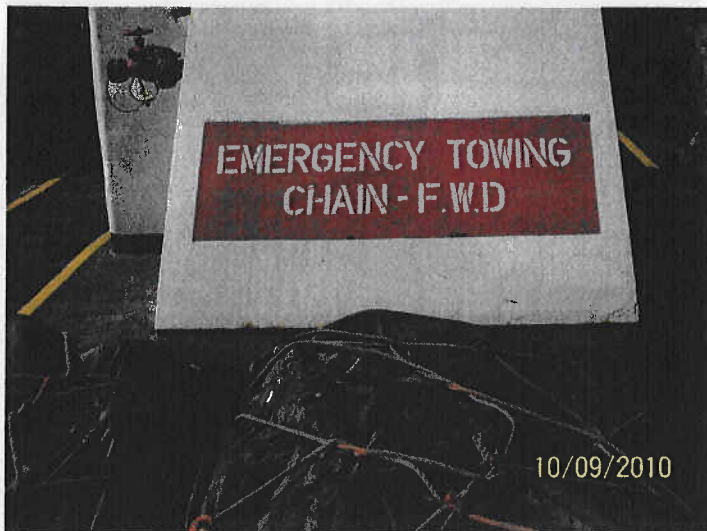
9/10/2010
 07 Main Deck garbage locker.JPG



9/10/2010
 06 Main deck garbage locker.JPG



9/10/2010
 01 Emerg. Towing aft.JPG



9/10/2010
02 Emerg. chain for'd.JPG



9/10/2010
01 Flex hose numbered.JPG

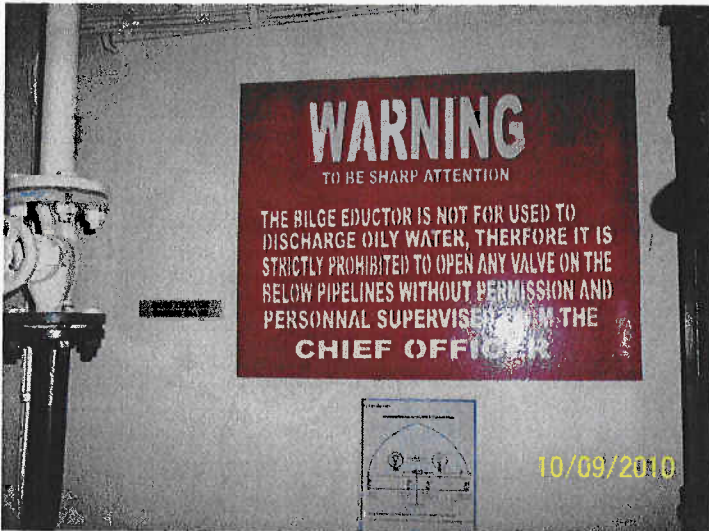


9/10/2010
02 Flex hose for'd store.JPG



9/10/2010
03 Flex hose for'd store.JPG

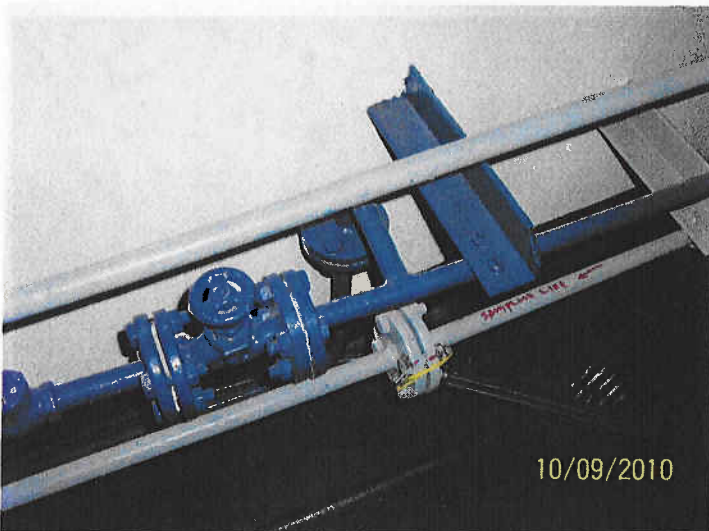
M/T PLOUTOS
ON-GOING ENVIRONNEMENTAL AUDIT
ARABIAN GULF
SEPTEMBER 07-12, 2010



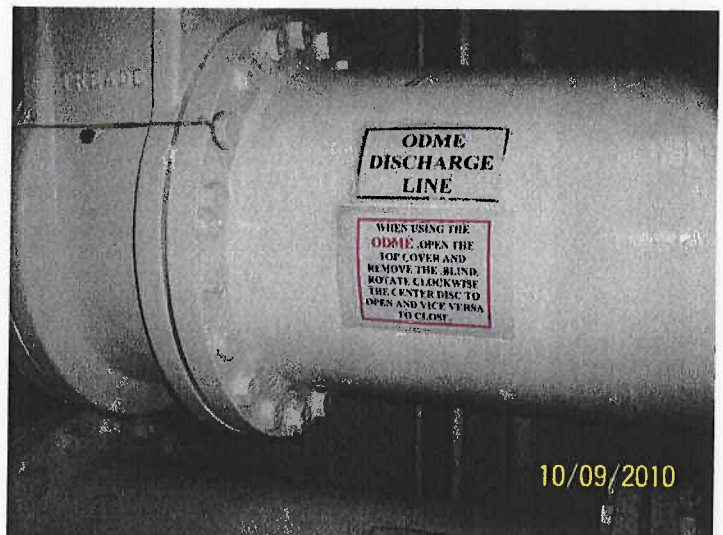
9/10/2010
01 For'd store bilge valve.JPG



9/10/2010
03 Pump room seals.JPG



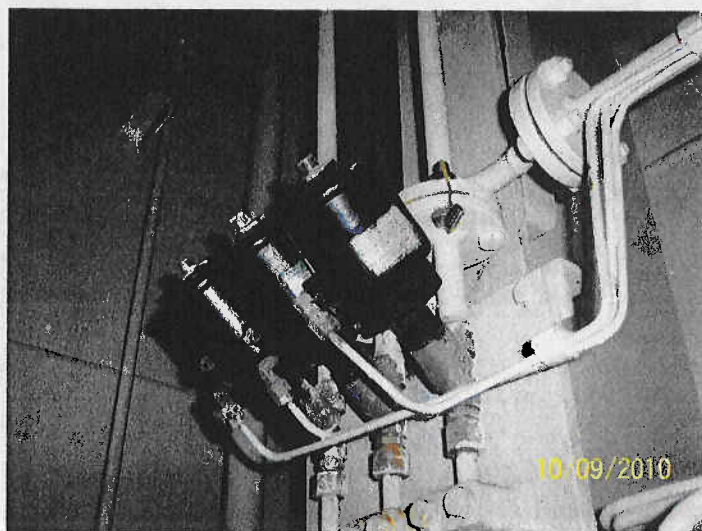
9/10/2010
04 Pump room seals.JPG



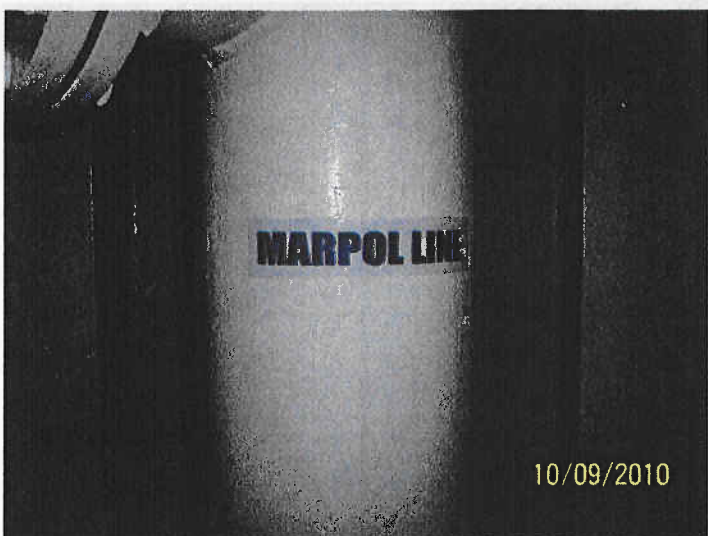
9/10/2010
05 ODME discharge line flange sealed.JPG



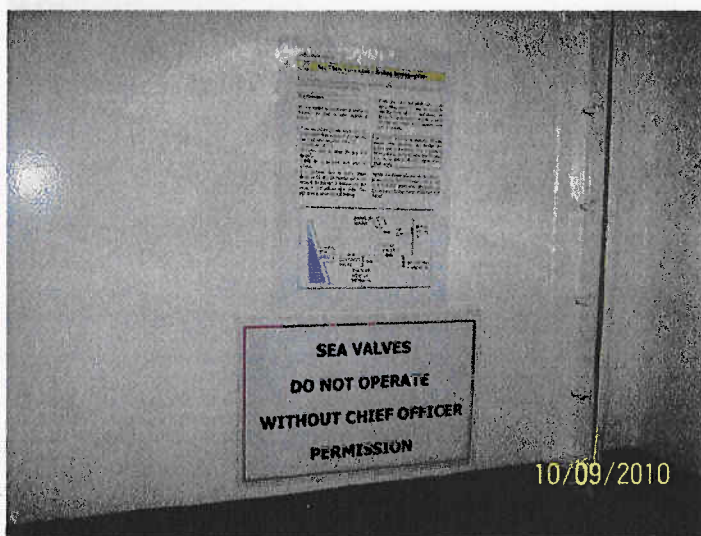
9/10/2010
07 ODME pumproom line flanges sealed.JPG



9/10/2010
06 ODME pumproom flanges sealed.JPG

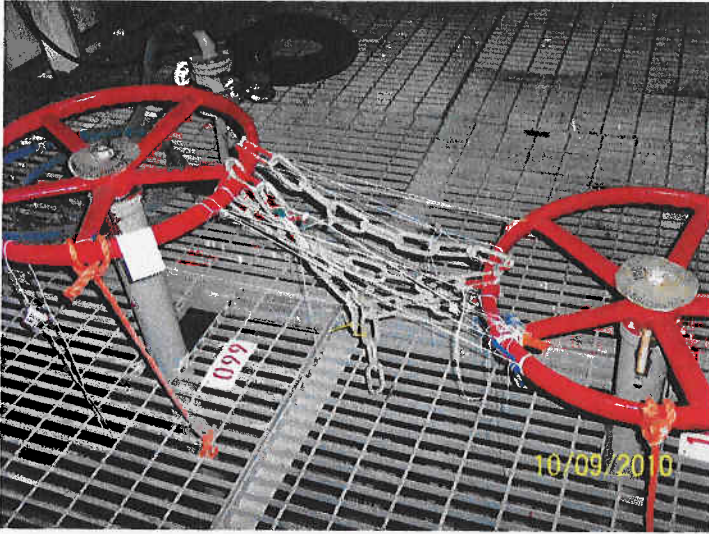


9/10/2010
08 MARPOL line marked.JPG



9/10/2010
09 Sea valve operation instructions.JPG

**M/T PLOUTOS
ON-GOING ENVIRONNEMENTAL AUDIT
ARABIAN GULF
SEPTEMBER 07-12, 2010**



9/10/2010
10 Pump room valves chained.JPG

